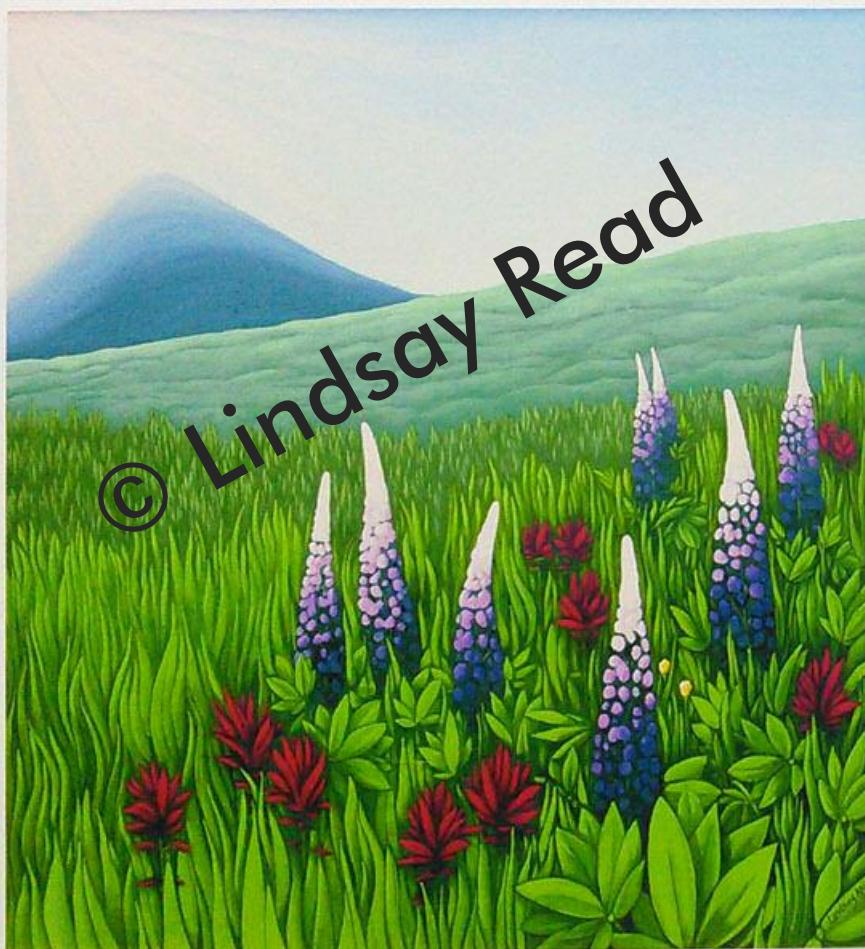
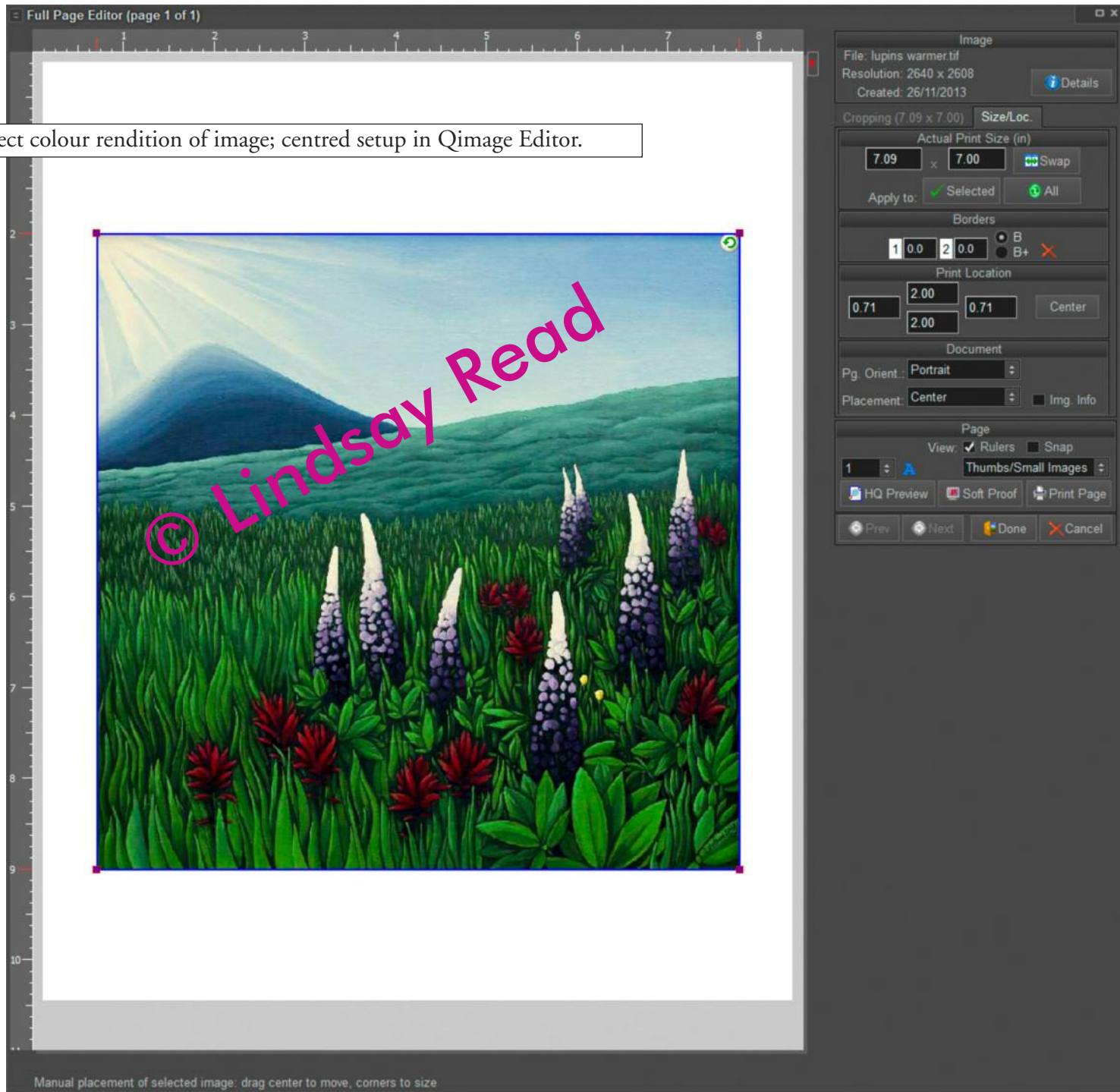
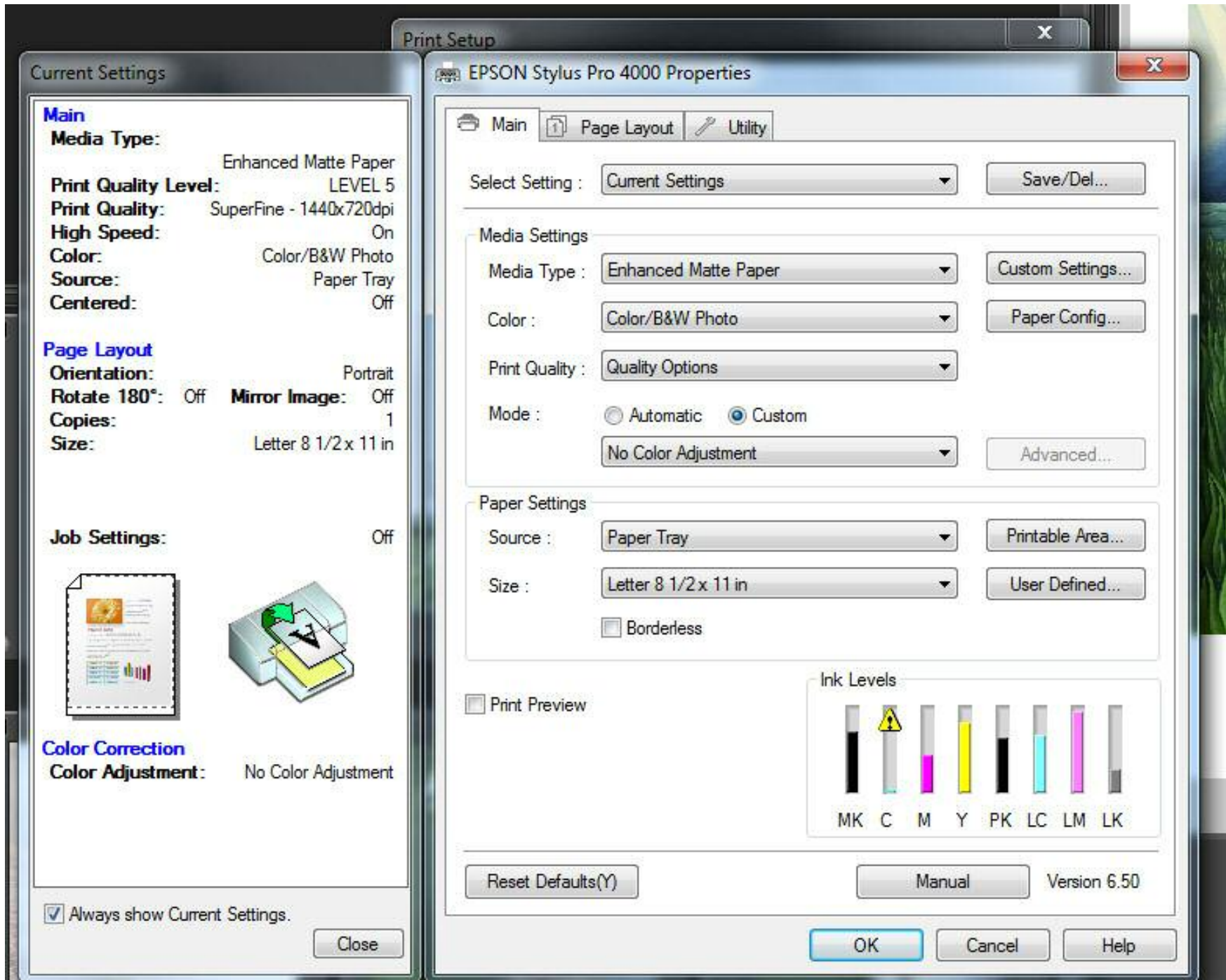


Image #1 printed off centre & lower on paper than Qimage setup; colour shifted.

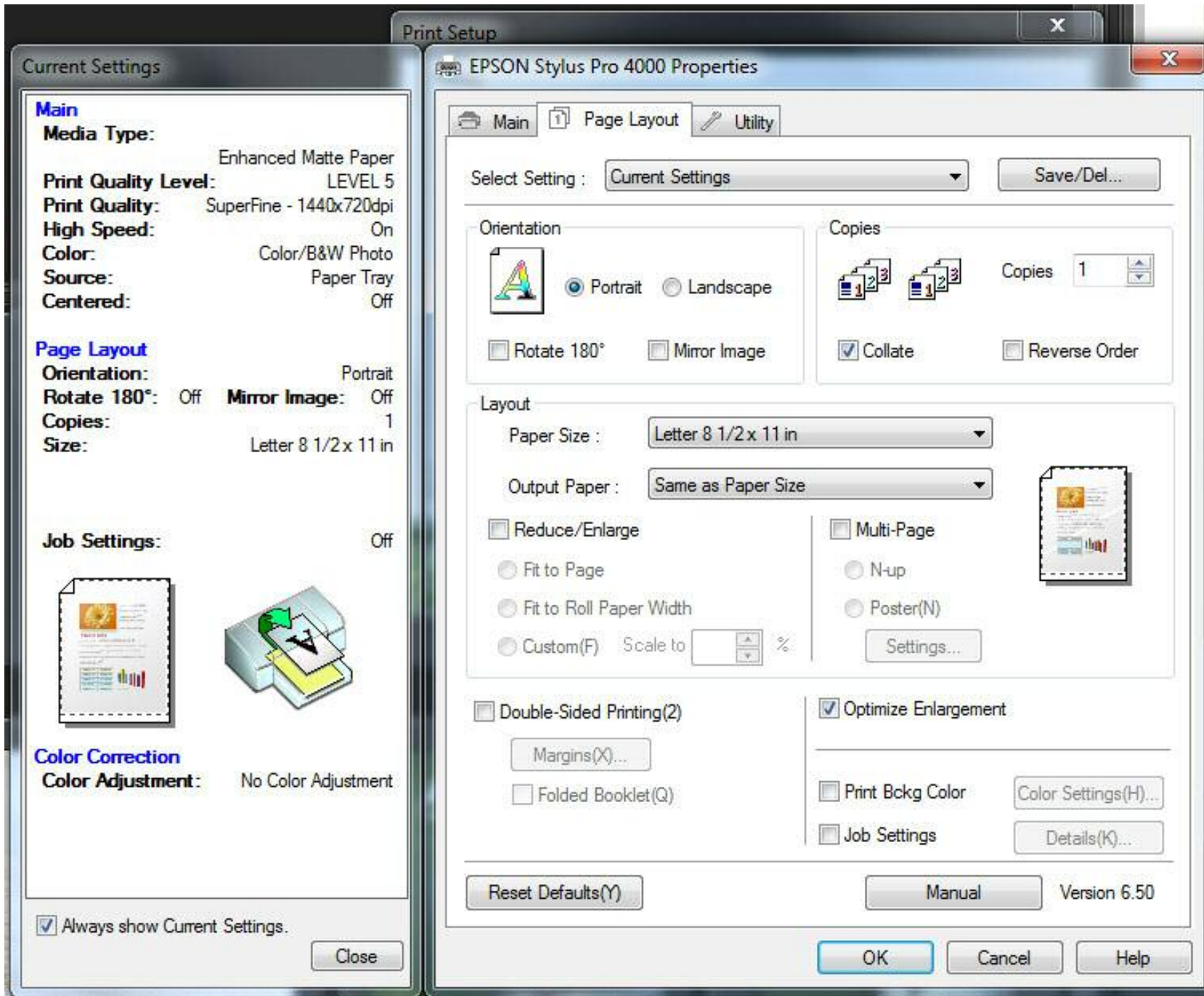




Correct colour rendition of image; centred setup in Qimage Editor.




Epson driver properties for this job – Main.



Epson driver properties for this job – Page Layout.

EPSON Stylus Pro 4000
Page: 8.266 x 10.333 in. (720 x 720)



© Lindsay Read

1

Job Properties Print Queue

Job Properties (Lindsay lupines letter size)

Mntr ICC: LCD2690WUXI 8X105120YA 2014-06-12 15-13 D65 2.20

Prtr ICC: Epson4000EnhancedMatte (P, BPC)

Prints: Max-720 PPI

Posters: Max-720 PPI

Interp.: Fusion

Sharpen: 5 (Default)

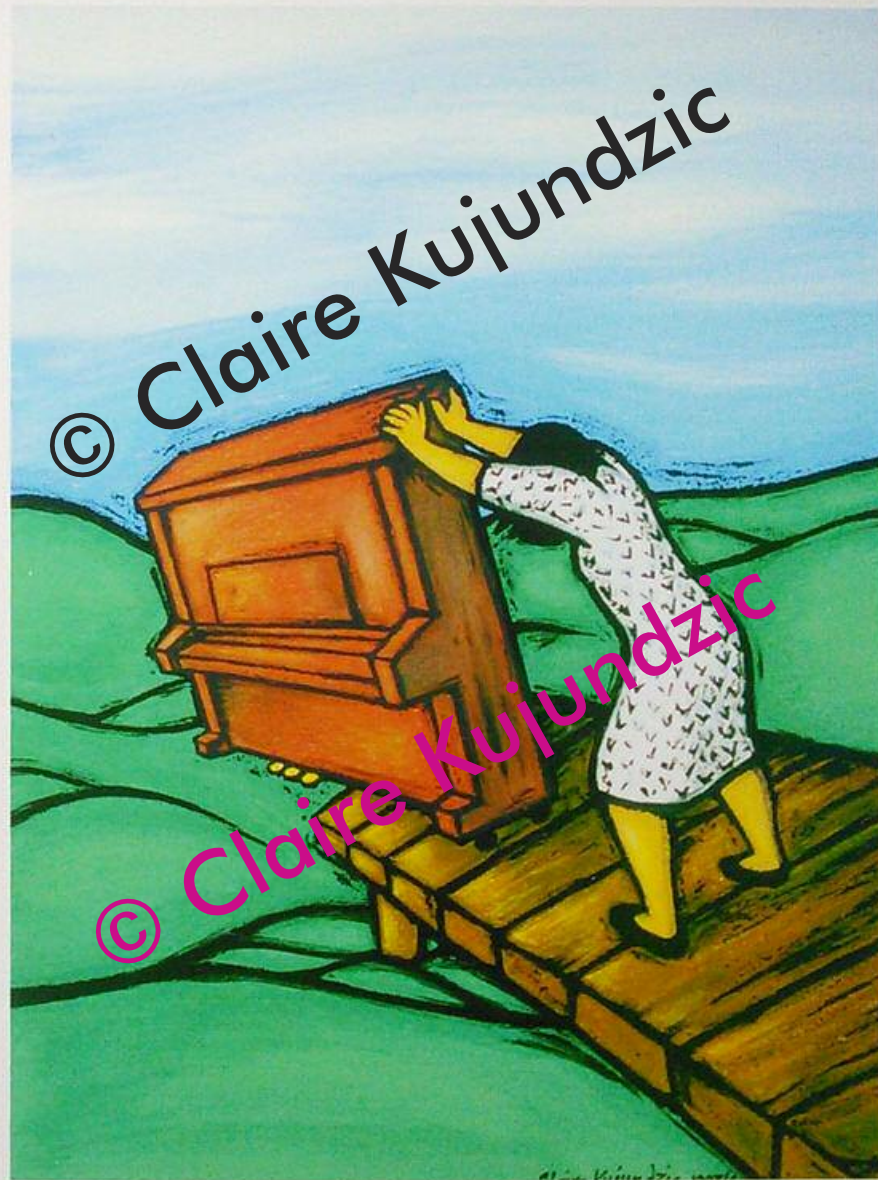
Canvas shrink 0.00 %

Info
 Edges
 G. Filt.
 P. Filt.

0%

Qimage job properties.

Image #2 printed off centre & lower on paper than Qimage setup; bottom of image and text caption clipped; colour shifted.



Correct colour rendition of image; centred setup in Qimage Editor; text caption visible.

The screenshot displays the Qimage Editor software interface. At the top, a ruler shows a scale from 1 to 8. The main workspace contains a central image of a woman in a white patterned dress pushing a large wooden upright piano onto a wooden pier. The background is a blue sky and greenish water. Two large, semi-transparent copyright notices are overlaid on the image: a black one at the top left and a pink one at the bottom center. The right-hand side of the window features a control panel with the following sections:

- Image:** File: Kiri3-flattened-PSD.tif, Resolution: 1188 x 1488, Created: 03/08/2014.
- Cropping (7.19 x 9.01):** Size/Loc. section with Actual Print Size (in) set to 7.19 x 9.01, Apply to: Selected, and Borders set to 1.00.
- Print Location:** Settings for top, bottom, left, and right margins, with a Center button.
- Document:** Pg. Orient.: Portrait, Placement: Center, and an Img. Info checkbox.
- Page:** View: Rulers and Snap checked, Thumbs/Small Images selected, and buttons for HQ Preview, Soft Proof, and Print Page.
- Navigation:** Buttons for Prev, Next, Done, and Cancel.

Print Setup

Current Settings

Main

Media Type: Enhanced Matte Paper

Print Quality Level: LEVEL 5

Print Quality: SuperFine - 1440x720dpi

High Speed: On

Color: Color/B&W Photo

Source: Paper Tray

Centered: Off

Page Layout



Orientation: Portrait

Rotate 180°: Off **Mirror Image:** Off

Copies: 1

Size: Letter 8 1/2 x 11 in

Job Settings: Off

Color Correction

Color Adjustment: No Color Adjustment

Always show Current Settings. Close

EPSON Stylus Pro 4000 Properties

Main Page Layout Utility

Select Setting : Current Settings Save/Del...

Media Settings

Media Type: Enhanced Matte Paper Custom Settings...

Color: Color/B&W Photo Paper Config...

Print Quality: Quality Options

Mode: Automatic Custom

No Color Adjustment Advanced...

Paper Settings

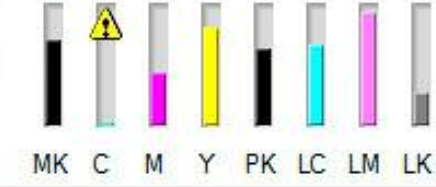
Source: Paper Tray Printable Area...

Size: Letter 8 1/2 x 11 in User Defined...

Borderless

Print Preview

Ink Levels

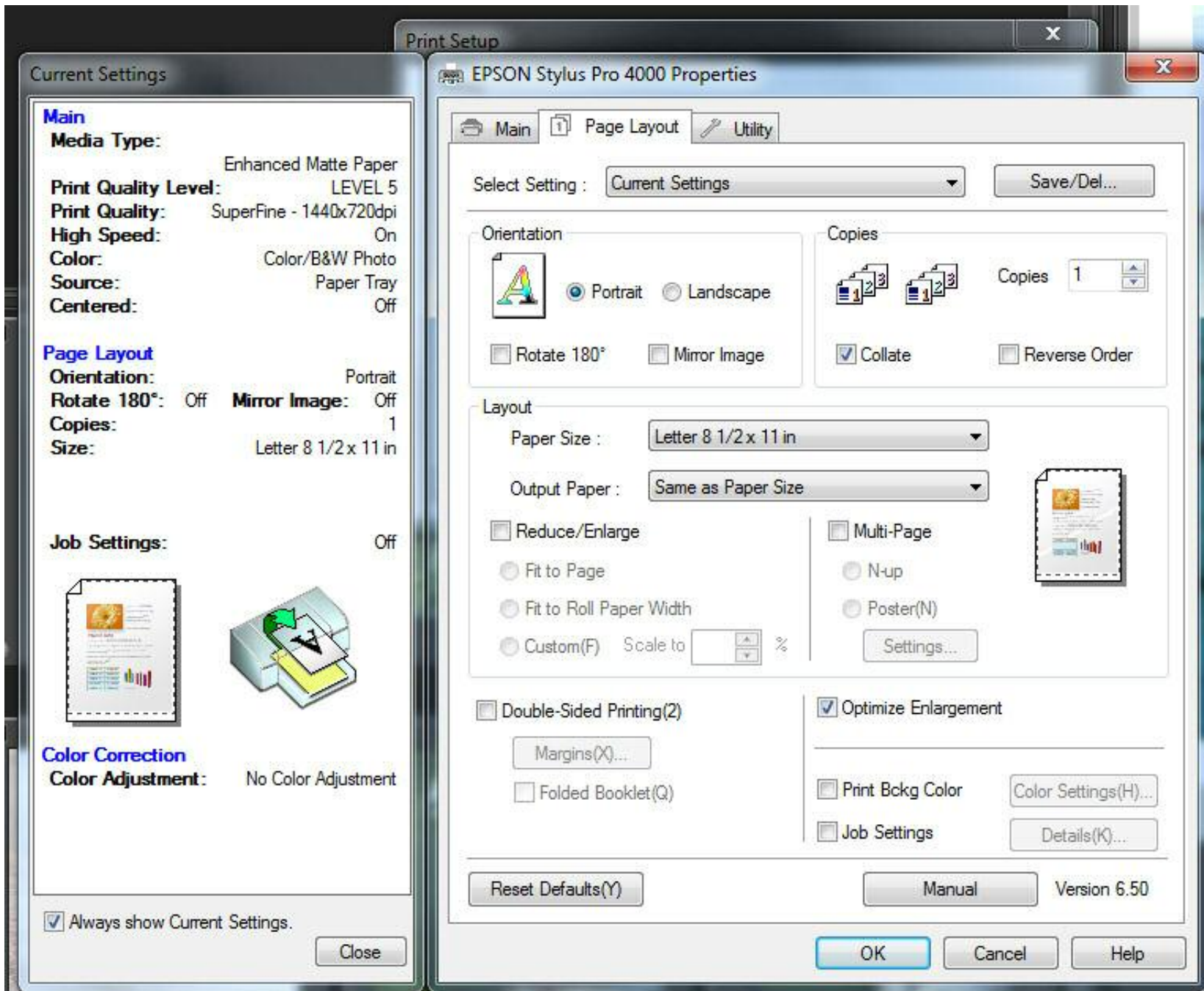


MK C M Y PK LC LM LK

Reset Defaults(Y) Manual Version 6.50

OK Cancel Help

Epson driver properties for this job – Main.



Epson driver properties for this job – Page Layout.